

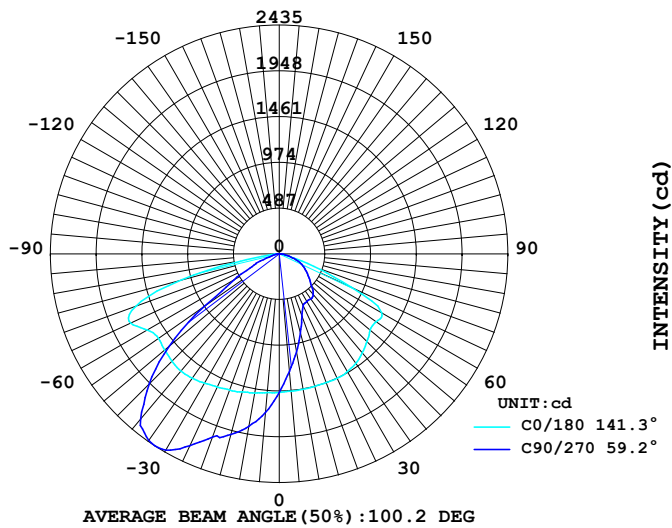
LUMINAIRE PHOTOMETRIC TEST REPORT

Report number:

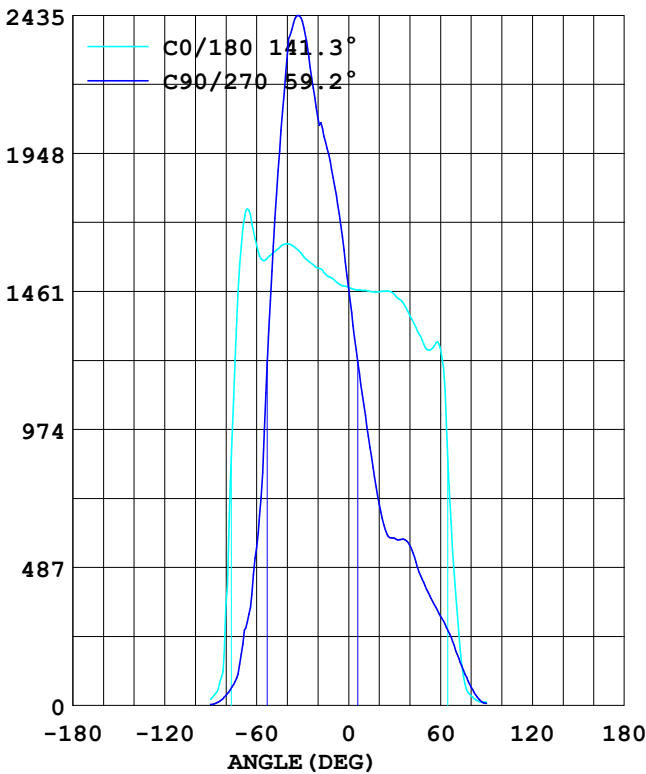
|  |                           |             |
|--|---------------------------|-------------|
| MANUFACTURER: ILUMEN GMBH              | Address:                  |             |
| NAME: Agnes C                          | TYPE: IL-PO29C-N0402C-T3B | WEIGHT:     |
| SPECIFICATION: 5050LED、3000K、145*53DEG | DIMENSION:                | SERIAL No.: |

|                   |        |                    |        |                   |       |
|-------------------|--------|--------------------|--------|-------------------|-------|
| DATA OF LAMP      |        | Imax(cd)           | 3098   | S/MH (C0/180)     | 1.67  |
| MODEL             |        | EFFICIENCY (%)     | 100.0  | S/MH (C90/270)    | 1.73  |
| NOMINAL POWER(W)  | 40     | TOTAL FLUX(lm)     | 5829.8 | Voltage(V)        | 231.0 |
| RATED VOLTAGE (V) | 232    | EFFICIENCY (lm/W)  | 150.1  | Current(A)        | 0.164 |
| NOMINAL FLUX(lm)  | 5829.9 | η up (%)           | 0.0    | Power(W)          | 38.84 |
| LAMPS QUANTITY    | 1      | η down (%)         | 100.0  | Power Factor (PF) | 0.919 |
| TEST VOLTAGE (V)  | 231.0  | Effective Flux(lm) | 5829.9 | EEI               | 0.100 |

LUMINOUS INTENSITY DISTRIBUTION



LUMINOUS INTENSITY DISTRIBUTION



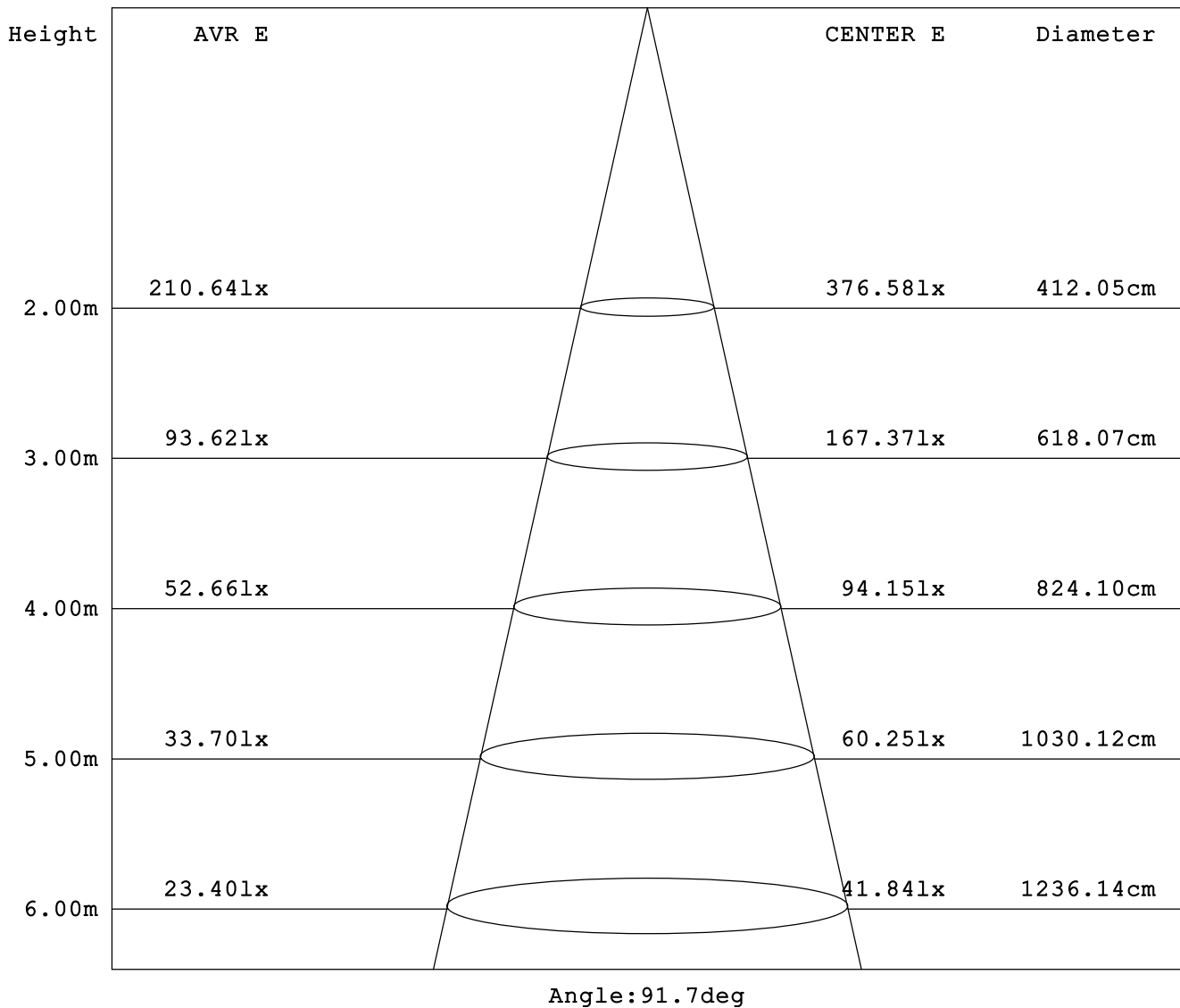
Test System:  
 Temperature: 25.3DEG  
 Operators:  
 Test Date: 2025.07.01

Test Set: 5.0deg/s C-Gamma (TYPE C)  
 Humidity: 65.0%  
 Test Distance: 10.000 m  
 Remarks:

## AVERAGE AND CENTER E Figure

Report number:

|  |                           |             |
|--|---------------------------|-------------|
| MANUFACTURER: ILUMEN GMBH              | Address:                  |             |
| NAME: Agnes C                          | TYPE: IL-PO29C-N0402C-T3B | WEIGHT:     |
| SPECIFICATION: 5050LED、3000K、145*53DEG | DIMENSION:                | SERIAL No.: |



Test System:  
Temperature: 25.3DEG  
Operators:  
Test Date: 2025.07.01

Test Set: 5.0deg/s C-Gamma (TYPE C)  
Humidity: 65.0%  
Test Distance: 10.000 m  
Remarks:

## ZONAL FLUX DIAGRAM

Report number:

|  |                           |             |
|--|---------------------------|-------------|
| MANUFACTURER: ILUMEN GMBH              | Address:                  |             |
| NAME: Agnes C                          | TYPE: IL-PO29C-N0402C-T3B | WEIGHT:     |
| SPECIFICATION: 5050LED、3000K、145*53DEG | DIMENSION:                | SERIAL No.: |

| γ     | C0                    | C45   | C90   | C135  | C180  | C225  | C270  | C315  | γ       | Zone    | total |
|-------|-----------------------|-------|-------|-------|-------|-------|-------|-------|---------|---------|-------|
| 5.0   | 1483                  | 1353  | 1693  | 1621  | 1467  | 1593  | 1255  | 1331  | 0- 5    | 35.26   | 35.26 |
| 10.0  | 1504                  | 1231  | 1862  | 1744  | 1464  | 1718  | 1060  | 1188  | 5- 10   | 105.4   | 140.7 |
| 15.0  | 1522                  | 1117  | 1989  | 1861  | 1460  | 1819  | 876.7 | 1055  | 10- 15  | 174.0   | 314.7 |
| 20.0  | 1544                  | 1005  | 2075  | 1973  | 1460  | 1935  | 710.6 | 923.3 | 15- 20  | 240.0   | 554.8 |
| 25.0  | 1563                  | 885.1 | 2253  | 2107  | 1461  | 2033  | 605.2 | 792.9 | 20- 25  | 305.1   | 859.9 |
| 30.0  | 1589                  | 767.5 | 2412  | 2248  | 1450  | 2103  | 589.5 | 675.3 | 25- 30  | 372.8   | 1233  |
| 35.0  | 1617                  | 667.4 | 2422  | 2321  | 1424  | 2209  | 586.5 | 608.4 | 30- 35  | 440.8   | 1674  |
| 40.0  | 1629                  | 618.9 | 2297  | 2398  | 1376  | 2339  | 565.3 | 611.4 | 35- 40  | 500.0   | 2174  |
| 45.0  | 1616                  | 607.4 | 1957  | 2376  | 1322  | 2433  | 488.2 | 640.9 | 40- 45  | 540.4   | 2714  |
| 50.0  | 1592                  | 627.2 | 1533  | 2251  | 1264  | 2451  | 422.4 | 626.0 | 45- 50  | 556.8   | 3271  |
| 55.0  | 1570                  | 582.6 | 967.1 | 1987  | 1261  | 2421  | 366.2 | 601.0 | 50- 55  | 545.8   | 3817  |
| 60.0  | 1624                  | 465.5 | 557.5 | 1788  | 1260  | 2285  | 316.0 | 465.9 | 55- 60  | 512.0   | 4329  |
| 65.0  | 1746                  | 325.5 | 322.7 | 1455  | 845.5 | 2266  | 263.2 | 324.9 | 60- 65  | 478.4   | 4807  |
| 70.0  | 1619                  | 228.8 | 181.1 | 936.2 | 391.4 | 2309  | 192.3 | 248.4 | 65- 70  | 447.2   | 5255  |
| 75.0  | 1077                  | 122.3 | 74.34 | 264.0 | 103.1 | 1817  | 124.7 | 126.1 | 70- 75  | 344.5   | 5599  |
| 80.0  | 356.0                 | 44.92 | 36.09 | 76.88 | 34.53 | 598.3 | 65.37 | 51.91 | 75- 80  | 181.7   | 5781  |
| 85.0  | 56.69                 | 16.21 | 11.67 | 27.97 | 14.22 | 52.60 | 22.80 | 15.64 | 80- 85  | 39.92   | 5821  |
| 90.0  | 22.26                 | 10.77 | 4.214 | 10.46 | 11.85 | 10.45 | 7.780 | 5.802 | 85- 90  | 8.931   | 5830  |
| 95.0  |                       |       |       |       |       |       |       |       | 90- 95  |         |       |
| 100.0 |                       |       |       |       |       |       |       |       | 95-100  |         |       |
| 105.0 |                       |       |       |       |       |       |       |       | 100-105 |         |       |
| 110.0 |                       |       |       |       |       |       |       |       | 105-110 |         |       |
| 115.0 |                       |       |       |       |       |       |       |       | 110-115 |         |       |
| 120.0 |                       |       |       |       |       |       |       |       | 115-120 |         |       |
| 125.0 |                       |       |       |       |       |       |       |       | 120-125 |         |       |
| 130.0 |                       |       |       |       |       |       |       |       | 125-130 |         |       |
| 135.0 |                       |       |       |       |       |       |       |       | 130-135 |         |       |
| 140.0 |                       |       |       |       |       |       |       |       | 135-140 |         |       |
| 145.0 |                       |       |       |       |       |       |       |       | 140-145 |         |       |
| 150.0 |                       |       |       |       |       |       |       |       | 145-150 |         |       |
| 155.0 |                       |       |       |       |       |       |       |       | 150-155 |         |       |
| 160.0 |                       |       |       |       |       |       |       |       | 155-160 |         |       |
| 165.0 |                       |       |       |       |       |       |       |       | 160-165 |         |       |
| 170.0 |                       |       |       |       |       |       |       |       | 165-170 |         |       |
| 175.0 |                       |       |       |       |       |       |       |       | 170-175 |         |       |
| 180.0 |                       |       |       |       |       |       |       |       | 175-180 |         |       |
| DEG   | LUMINOUS INTENSITY:cd |       |       |       |       |       |       |       |         | UNIT:lm |       |

Test System:  
Temperature:25.3DEG  
Operators:  
Test Date:2025.07.01

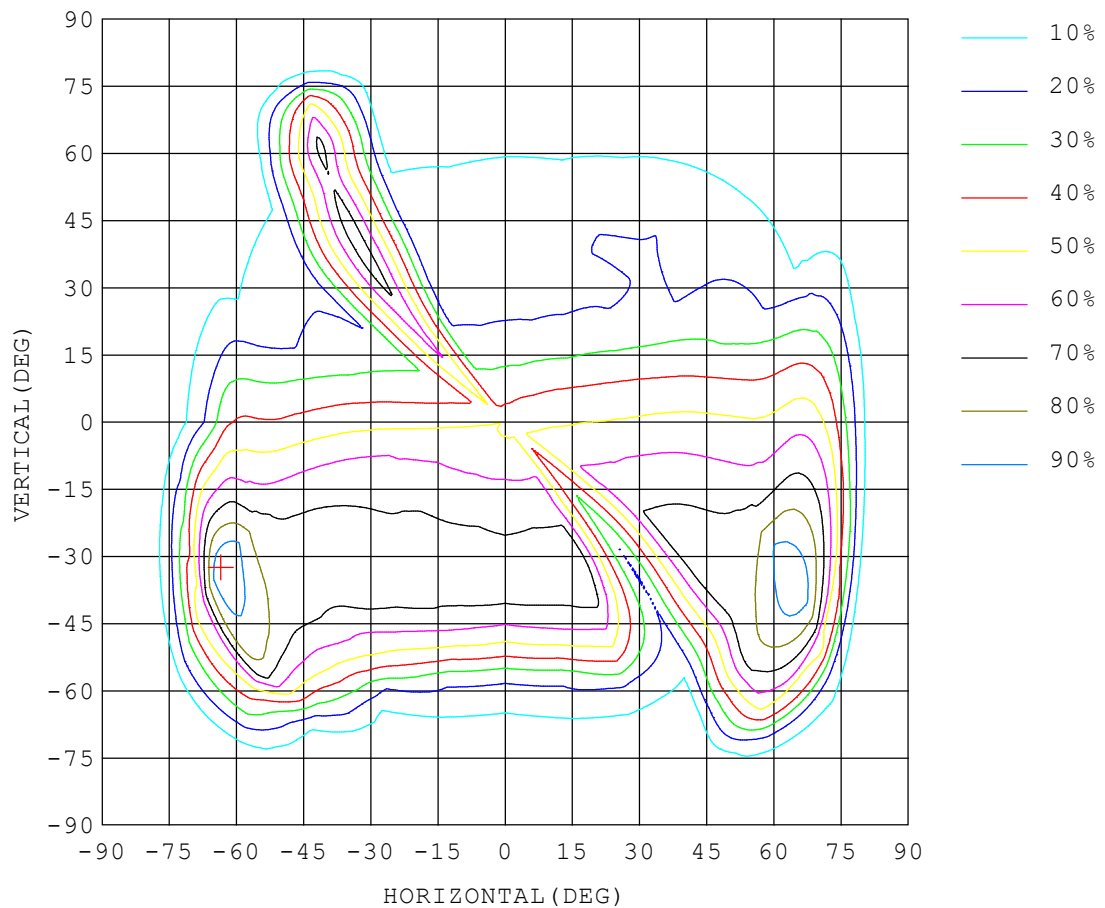
Test Set: 5.0deg/s C-Gamma (TYPE C)  
Humidity:65.0%  
Test Distance:10.000 m  
Remarks:

## ISOCANDELA DIAGRAM

Report number:

|  |                           |             |
|--|---------------------------|-------------|
| MANUFACTURER: ILUMEN GMBH              | Address:                  |             |
| NAME: Agnes C                          | TYPE: IL-PO29C-N0402C-T3B | WEIGHT:     |
| SPECIFICATION: 5050LED、3000K、145*53DEG | DIMENSION:                | SERIAL No.: |

UNIT: cd



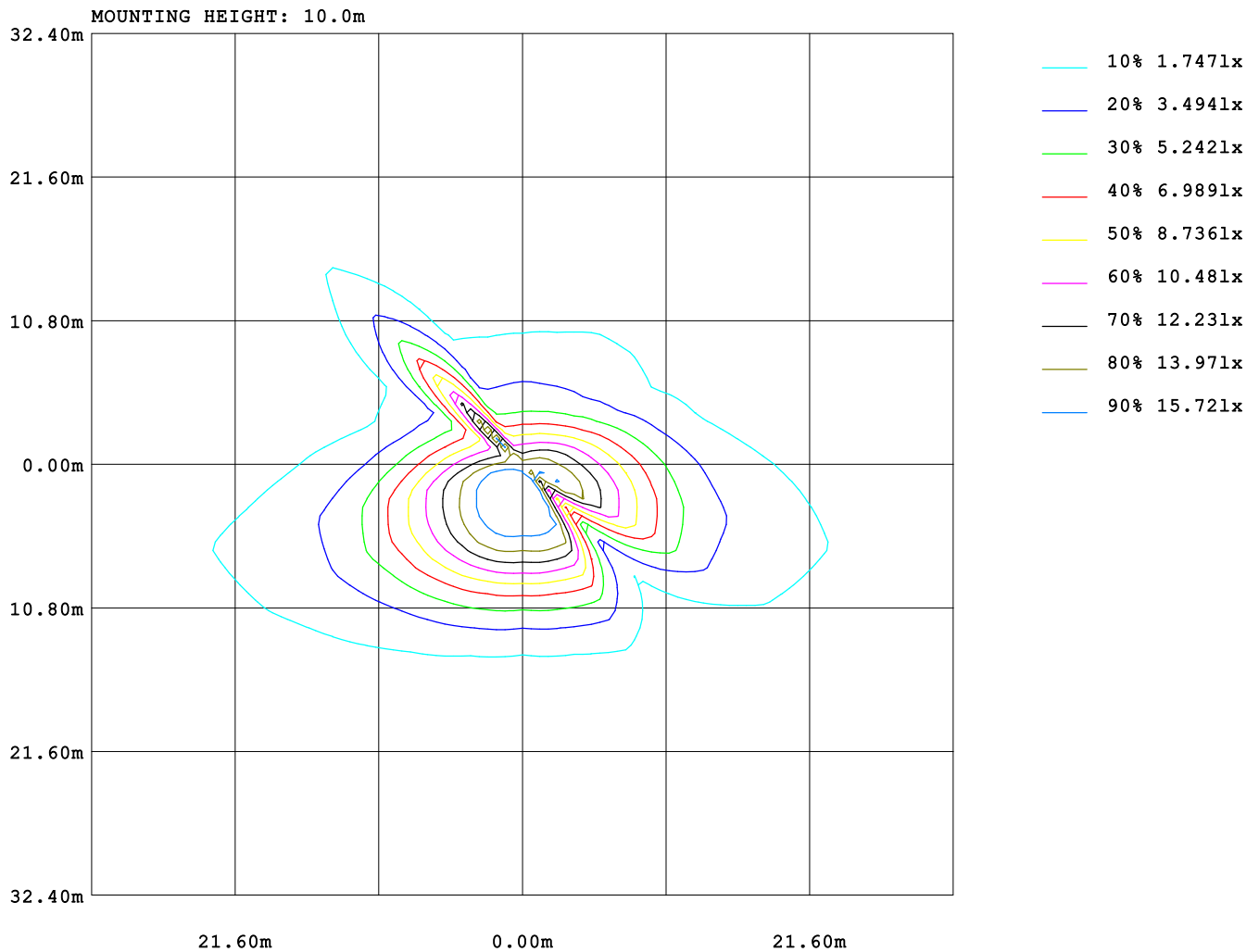
Test System:  
Temperature: 25.3 DEG  
Operators:  
Test Date: 2025.07.01

Test Set: 5.0 deg/s C-Gamma (TYPE C)  
Humidity: 65.0%  
Test Distance: 10.000 m  
Remarks:

## ISOLUX DIAGRAM

Report number:

|  |                           |             |
|--|---------------------------|-------------|
| MANUFACTURER: ILUMEN GMBH              | Address:                  |             |
| NAME: Agnes C                          | TYPE: IL-PO29C-N0402C-T3B | WEIGHT:     |
| SPECIFICATION: 5050LED、3000K、145*53DEG | DIMENSION:                | SERIAL No.: |



Test System:  
Temperature: 25.3DEG  
Operators:  
Test Date: 2025.07.01

Test Set: 5.0deg/s C-Gamma (TYPE C)  
Humidity: 65.0%  
Test Distance: 10.000 m  
Remarks:

## LUMINOUS DISTRIBUTION INTENSITY DATA

Report number:

|  |                           |             |
|--|---------------------------|-------------|
| MANUFACTURER: ILUMEN GMBH              | Address:                  |             |
| NAME: Agnes C                          | TYPE: IL-PO29C-N0402C-T3B | WEIGHT:     |
| SPECIFICATION: 5050LED、3000K、145*53DEG | DIMENSION:                | SERIAL No.: |

UNIT: cd

| C (DEG)<br>γ (DEG) | 0    | 15   | 30   | 45   | 60   | 75   | 90   | 105  | 120  | 135  | 150  | 165  | 180  | 195  | 210  |
|--------------------|------|------|------|------|------|------|------|------|------|------|------|------|------|------|------|
| 0.0                | 1476 | 1476 | 1476 | 1476 | 1476 | 1476 | 1476 | 1476 | 1476 | 1476 | 1476 | 1476 | 1476 | 1476 | 1476 |
| 5.0                | 1483 | 1541 | 1593 | 1353 | 1671 | 1694 | 1693 | 1686 | 1655 | 1621 | 1572 | 1522 | 1467 | 1407 | 1353 |
| 10.0               | 1504 | 1620 | 1718 | 1231 | 1838 | 1871 | 1862 | 1853 | 1799 | 1744 | 1661 | 1570 | 1464 | 1340 | 1231 |
| 15.0               | 1522 | 1690 | 1819 | 1117 | 1978 | 2009 | 1989 | 1982 | 1921 | 1861 | 1752 | 1628 | 1460 | 1272 | 1117 |
| 20.0               | 1544 | 1768 | 1935 | 1005 | 2069 | 2139 | 2075 | 2109 | 2001 | 1973 | 1848 | 1683 | 1460 | 1201 | 1005 |
| 25.0               | 1563 | 1841 | 2033 | 885  | 2232 | 2327 | 2253 | 2301 | 2179 | 2107 | 1902 | 1742 | 1461 | 1130 | 885  |
| 30.0               | 1589 | 1926 | 2103 | 768  | 2434 | 2489 | 2412 | 2461 | 2362 | 2248 | 1995 | 1813 | 1450 | 1052 | 768  |
| 35.0               | 1617 | 2013 | 2209 | 667  | 2551 | 2549 | 2422 | 2515 | 2462 | 2321 | 2098 | 1877 | 1424 | 960  | 667  |
| 40.0               | 1629 | 2080 | 2339 | 619  | 2483 | 2411 | 2297 | 2377 | 2397 | 2398 | 2205 | 1923 | 1376 | 856  | 619  |
| 45.0               | 1616 | 2118 | 2433 | 607  | 2307 | 2088 | 1957 | 2069 | 2240 | 2376 | 2290 | 1960 | 1322 | 734  | 607  |
| 50.0               | 1592 | 2160 | 2451 | 627  | 1977 | 1718 | 1533 | 1714 | 1944 | 2251 | 2346 | 1989 | 1264 | 602  | 627  |
| 55.0               | 1570 | 2231 | 2421 | 583  | 1553 | 1170 | 967  | 1180 | 1564 | 1987 | 2371 | 2051 | 1261 | 473  | 583  |
| 60.0               | 1624 | 2487 | 2285 | 466  | 973  | 650  | 558  | 649  | 1038 | 1788 | 2333 | 2318 | 1260 | 373  | 466  |
| 65.0               | 1746 | 2947 | 2266 | 326  | 523  | 379  | 323  | 367  | 492  | 1455 | 2357 | 2841 | 846  | 281  | 326  |
| 70.0               | 1619 | 3098 | 2309 | 229  | 273  | 241  | 181  | 232  | 261  | 936  | 2383 | 2628 | 391  | 170  | 229  |
| 75.0               | 1077 | 2457 | 1817 | 122  | 112  | 101  | 74.3 | 93.5 | 90.2 | 264  | 1204 | 1456 | 103  | 86.4 | 122  |
| 80.0               | 356  | 755  | 598  | 44.9 | 54.1 | 51.3 | 36.0 | 44.9 | 40.4 | 76.8 | 423  | 430  | 34.5 | 27.1 | 44.9 |
| 85.0               | 56.6 | 109  | 52.6 | 16.2 | 19.0 | 22.5 | 11.6 | 19.7 | 12.1 | 27.9 | 23.5 | 43.7 | 14.2 | 8.02 | 16.2 |
| 90.0               | 22.2 | 26.0 | 10.4 | 10.7 | 7.71 | 8.79 | 4.21 | 8.63 | 4.09 | 10.4 | 4.61 | 13.8 | 11.8 | 7.91 | 10.7 |

Test System:  
Temperature: 25.3DEG  
Operators:  
Test Date: 2025.07.01

Test Set: 5.0deg/s C-Gamma (TYPE C)  
Humidity: 65.0%  
Test Distance: 10.000 m  
Remarks:

## LUMINOUS DISTRIBUTION INTENSITY DATA

Report number:

|   |                                  |                    |
|---|----------------------------------|--------------------|
| <b>MANUFACTURER: ILUMEN GMBH</b>              | <b>Address:</b>                  |                    |
| <b>NAME: Agnes C</b>                          | <b>TYPE: IL-PO29C-N0402C-T3B</b> | <b>WEIGHT:</b>     |
| <b>SPECIFICATION: 5050LED、3000K、145*53DEG</b> | <b>DIMENSION:</b>                | <b>SERIAL No.:</b> |

UNIT: cd

| C (DEG)<br>γ (DEG) | 225  | 240  | 255  | 270  | 285  | 300  | 315  | 330  | 345  |
|--------------------|------|------|------|------|------|------|------|------|------|
| 0.0                | 1476 | 1476 | 1476 | 1476 | 1476 | 1476 | 1476 | 1476 | 1476 |
| 5.0                | 1593 | 1275 | 1255 | 1255 | 1264 | 1292 | 1331 | 1383 | 1438 |
| 10.0               | 1718 | 1093 | 1060 | 1060 | 1072 | 1121 | 1188 | 1287 | 1397 |
| 15.0               | 1819 | 926  | 878  | 877  | 899  | 966  | 1055 | 1191 | 1353 |
| 20.0               | 1935 | 763  | 712  | 711  | 734  | 810  | 923  | 1091 | 1306 |
| 25.0               | 2033 | 637  | 606  | 605  | 617  | 670  | 793  | 1000 | 1260 |
| 30.0               | 2103 | 591  | 587  | 590  | 586  | 597  | 675  | 900  | 1217 |
| 35.0               | 2209 | 597  | 588  | 587  | 587  | 599  | 608  | 790  | 1163 |
| 40.0               | 2339 | 617  | 576  | 565  | 589  | 619  | 611  | 686  | 1101 |
| 45.0               | 2433 | 598  | 502  | 488  | 539  | 632  | 641  | 602  | 1011 |
| 50.0               | 2451 | 502  | 423  | 422  | 448  | 582  | 626  | 558  | 897  |
| 55.0               | 2421 | 405  | 362  | 366  | 381  | 464  | 601  | 525  | 775  |
| 60.0               | 2285 | 315  | 307  | 316  | 317  | 360  | 466  | 467  | 628  |
| 65.0               | 2266 | 257  | 253  | 263  | 263  | 282  | 325  | 360  | 451  |
| 70.0               | 2309 | 189  | 182  | 192  | 195  | 209  | 248  | 249  | 260  |
| 75.0               | 1817 | 117  | 109  | 125  | 117  | 136  | 126  | 154  | 116  |
| 80.0               | 598  | 58.0 | 52.3 | 65.3 | 56.2 | 66.0 | 51.9 | 61.2 | 45.0 |
| 85.0               | 52.6 | 19.4 | 14.2 | 22.8 | 16.1 | 23.7 | 15.6 | 21.3 | 11.6 |
| 90.0               | 10.4 | 8.14 | 4.06 | 7.78 | 3.99 | 8.70 | 5.80 | 10.8 | 6.30 |

Test System:  
 Temperature: 25.3DEG  
 Operators:  
 Test Date: 2025.07.01

Test Set: 5.0deg/s C-Gamma (TYPE C)  
 Humidity: 65.0%  
 Test Distance: 10.000 m  
 Remarks: